

Automatic Alarm Handling and Dispatch

ZONITH Alarm Control System

Collects alarms from any alarm system (fire-, technical-, panic-, lone worker- etc.) and notifies the most capable person(s) for the job by digital radio, pager, mobile phone or email. This drastically increases both the efficiency and the safety of a work place. This system has already shown its worth in power plants, paper mills, oil rigs, public offices and many other areas.

One Interface for All Alarms

If your company has several alarm systems it can be a job in itself to manage them all. Getting alarms to the right people at the right time in the right way has always been a challenge.

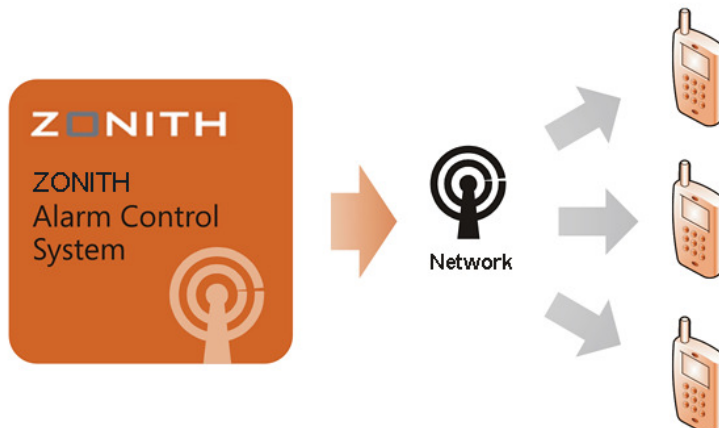
ZONITH Alarm Control System has successfully taken up this challenge. It handles alarms from any kind of system no matter source or type of alarm, and automatically dispatches them directly by text message by radio (TETRA or MotoTrbo), mobile phone, pager or email.



Centralized, Automated and Direct

Instead of multiple alarm systems ZONITH Alarm Control System offers you one interface for all your alarms. All alarms are dispatched automatically.

Alarms are channeled into the ZONITH Alarm Control System and automatically logged, inspected and dispatched to the radios of relevant personnel. The relevant persons receive a text message describing the alarm in clear text with exact location and nature of the alarm.



Prioritized Alarms for High Efficiency

Not all alarms are equally important. Some demand immediate attention and others can wait. You save resources by handling low priority alarms at the most convenient time of day for example.

The Action Filters, developed by Zonith, ensure that critical alarms are handled instantly, and lower priority alarms are handled when resources are available.

Lone Worker Protection

Lone workers can be very well protected by the ZONITH Alarm Control System through functionalities like dead man's buttons, panic buttons and even Bluetooth based Indoor Positioning. This ensures that you know exactly where the lone worker is located, and that others will be notified if the lone worker is in danger.

The ZONITH Alarm Control System also has heart beat-and alive check functionalities, which raises alarms if something is wrong with the network or other vital parts of the lone worker protection system.

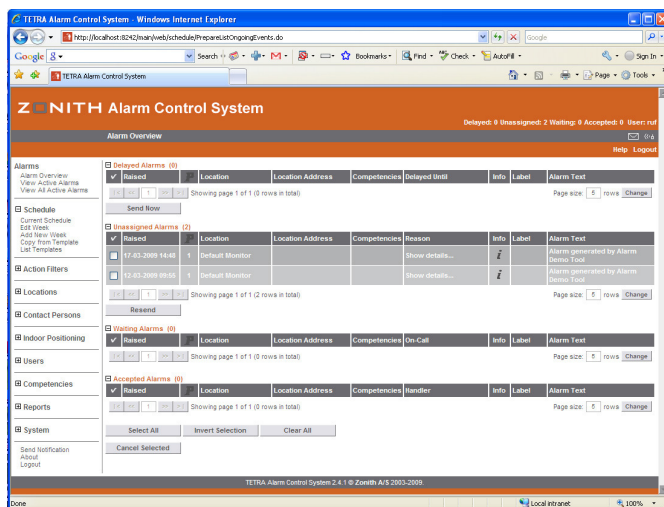
Always the Right Man for the Job

A key feature that elevates the ZONITH Alarm Control System to a higher level is the watch schedule integration. This allows for the manager to plan all activities in the ZONITH Alarm Control System, enabling the system to dispatch alerts to the right people at the right time.

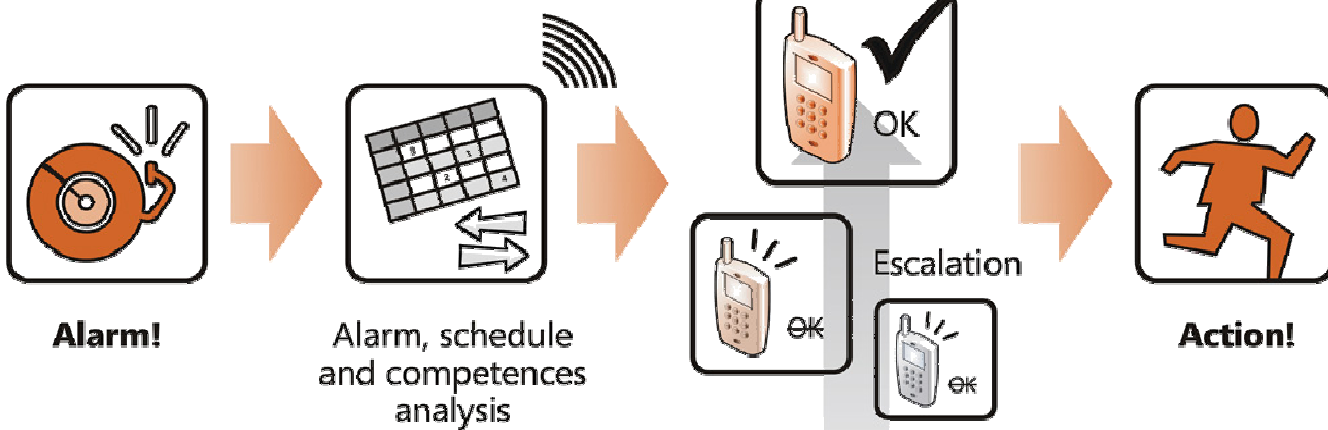
When an alarm is activated the ZONITH Alarm Control System registers what kind of alarm it is and who is on duty. It then cross refers the alarm with the watch schedule. If it is a fire alarm, fire fighters are called, and if it is an electrical failure electricians are called.

Ensured Alarm Handling

When an alarm is activated it is important to know if it is being handled. The ZONITH Alarm Control System has a build-in solution for this demand. Whenever you receive a text message with an alarm on your radio, you get the option to *accept* or *decline* handling the alarm. If you decline handling the alarm or too much time goes by without any reaction, the alarm will be escalated to the next person in line.



ZONITH Alarm Control System runs in a standard browser, so any authorized employee can access the program from anywhere.



Key Features

- ▶ Active, Centralized and Automated 24/7
- ▶ Handles Any Alarm from Any Source
- ▶ Integrated Watch Schedule
- ▶ Network Alive Checker
- ▶ Prioritizes Alarms for Optimal Use of Resources
- ▶ Notification Possible via TETRA, MotoTrbo, GSM, Pocsag Pager and E-mail.
- ▶ You can also connect I/O connections.

Typical uses

- ▶ **Production Plants** needs safe alarm communication
- ▶ **Emergency Services** i.e. blue lights
- ▶ **People security** i.e. Lone Worker Protection and Assault and Panic Alarms
- ▶ **Building Management** i.e. fire, intrusion and technical fault detection systems
- ▶ **Crowd Security** i.e. sporting events, shopping malls, public transportation