



- The fastest response time
- The most flexible system structure
- Unlimited recording capacity for all data
- Open standards
- Legal recording and CWP recording in one system



# RICOCHET

## RECORD AND REPLAY SYSTEMS



[www.jotron.com](http://www.jotron.com)

## JOTRON RICOCHET

Jotron is a leading supplier of VHF and UHF radio equipment for air traffic management (ATM) operations. Ricochet is Jotron's world leading synchronised record and replay system within the ATM and marine markets.

## RICOCHET RECORD AND REPLAY

The product has been designed to meet the specific demands of worldwide ATM environments and is fully compliant with national and international standards.

The unique set of Ricochet software modules can be assembled in a multitude of combinations. Ricochet software, coupled with COTS hardware, enables Jotron to deliver a state of the art recording system.

## KEY FEATURES

### RECORDING

Ricochet supports a wide range of data interfaces and protocols. Essentially, all data streamed on a serial line or an IP network can be recorded.

All data is time stamped and indexed enabling accurate and prompt response times during replay. Numerous time sources are supported, including NTP, NMEA, IRIG\_B and Warton.

### REPLAY

The replay user interface is very intuitive and is easy to learn. The main window displays a visualisation of recorded data on a timeline. Ricochet replay provides superior input response times, without prior preparation.

Replay commences immediately, selecting and deselecting channels or changing replay time is done at the click of a finger.

Ricochet includes a generous amount of replay tools such as; individual volume controls, left or right speaker control, an audio analyser for slow speed replay with pitch control, looping, fast forwarding, bookmarking, video zooming, panning, snapshotting and data forwarding options for more advanced applications.

Realtime monitoring functionality is also available.

You can choose from the following data handling functions:

- **Quarantine:** A copy of selected data saved to a secure area, ensuring it is available after a scheduled deletion
- **Impound:** A copy of a single secure file based on a select time period and channel(s) which can be replayed in the Catch Offline Player
- **Archive:** A copy of a set of recorded files and configuration saved for off-line storage for replay in the Offline Player
- **Export:** A copy of selected data in an audio or video file that can be played in a mainstream media player

### CATCH OFFLINE PLAYER

Catch Offline is a light version of the replay client, which runs stand-alone and replays impound files and archived data.

### MANAGEMENT FEATURES

The required administration and management features for maintaining the system are included in accordance with ATM applications:

- Alarm management with interfaces for external alarm circuit connections and support for SNMP
- User and user group administration with a set of access rules
- Graphical analogue audio input tuning tool
- Audit trail

## WIDE RANGE OF SOLUTIONS

The Ricochet solution is applicable for a single 8 channel audio recorder or a nationwide turn-key solution, ensuring effective and comprehensive investigation and analysis of recorded data.

The modular architecture and the IP based intercommunication offers virtually no limits to how a system can be built. Ricochet is used to record the following:

- **Radio communications:** Analogue, digital, E1, ISDN, RTP, ED-137B
- **Telephones:** Analogue, digital and IP
- **Ambient microphones**
- **Screen images:** VGA, DVI, DisplayPort using H.264 or lossless coding with

resolution up to 4k2k (UHD)

- **Radar:** Serial og Ethernet interface. Support several Asterix categories
- **CCTV:** IP cameras

Any of the above modules can be combined.

Ricochet is used as a recording solution for the following locations:

- Nationwide solutions (distributed data collection and recording modules, integrated management replay and data handling)
- Area Control Centres (a turn-key solution for hundreds of audio channels and screens)
- Airports of all sizes (from a single audio recorder to a comprehensive multi-channel system integrated with other ATM systems)
- Remote tower solutions (audio and video)
- Defence installations
- Navy vessel and offshore platform heliports (audio, radar and CCTV)
- Vessel traffic services (radio, telephones, marine radar video and tracks, AIS and CCTV)



## INTERCONNECT MULTIPLE SYSTEMS

Multiple systems can easily be interconnected giving an investigator access to data recorded at any site, individually or integrated. Investigators can select freely recorded data from any site, in any combination and replay synchronously, or archive, impound or export for long term storage or distribution.

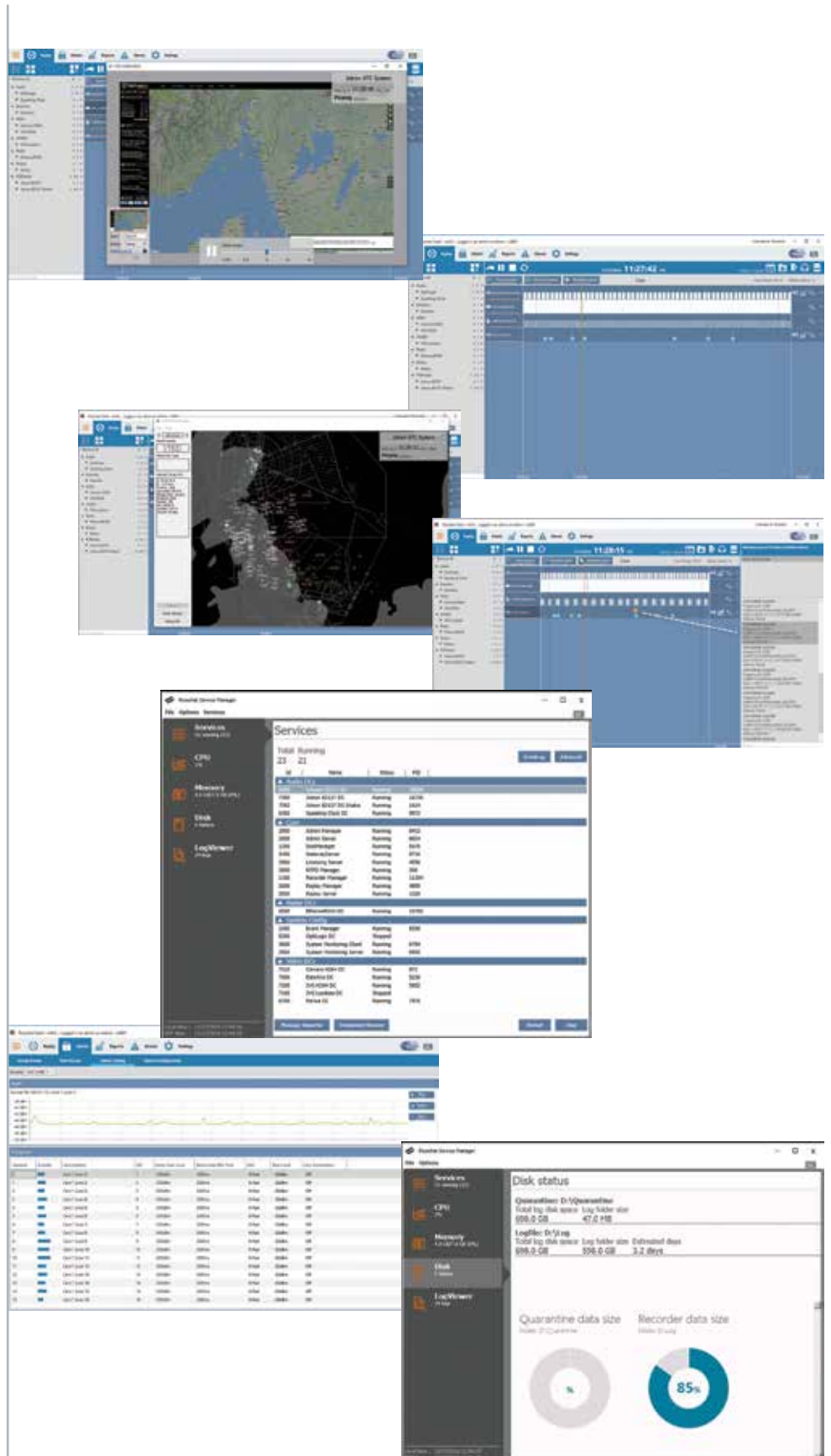
In the same manner multiple systems can be administrated from a central location, effectively becoming one system.

## THE FUTURE IS NOW

All systems involved in ATM are moving gradually towards an all digital world. Recording systems by nature must evolve since the requirement for recording is still a necessity. Cloud solutions are becoming part of the infrastructure design for ATM, tying all equipment and functions together via IP networks. The future is that a component can be reached and controlled anywhere.

Jotron has implemented the ED-137 standard for interchange of digital audio over IP networks in the Ricochet recording system as well as in the VHF and UHF radio equipment.

This is however, just the start. Only when standards are designed and adopted for all data flows, and the standards also include replay and data handling functions, the completely integrated ATM recording and replay «cloud» can reach its full potential.







## ► THE FUTURE IS NOW

### «RICOCHET INSIDE»

The underlying architecture of the Ricochet software makes it ideal for distributing modules, collecting necessary data and tying it together as a system.

The Ricochet Replay API, which is the name of the control message protocol used between the software application and the recording system, is public and open for anyone to use. Some VCS and VTS vendors have utilised this and written replay functions into VCS panels and VTS traffic displays.

Jotron Ricochet's next product will include new and enhanced features allowing for easier installation, configuration and integration between Ricochet modules and sub-systems, and other systems required to manage a comprehensive investigation.

### LONG TERM RELATIONSHIPS

Jotron offers a selection of support levels. The company encourages customers to contact Jotron regarding usage and maintenance of Jotron's products, especially for recording systems that are based on software running on COTS hardware. Systems can often be updated or modernized gradually, thereby extending the lifetime. Jotron want to ensure you enjoy the full potential of their products.

Type and functionality of recorders	RICOCHET
Controller Working Position (CWP) recorder <ul style="list-style-type: none"> <li>• Unlimited number of screens per CWP</li> <li>• Unlimited number of audio channels at the CWP</li> <li>• Keyboard and mouse recording at the CWP</li> </ul>	✓
Legal audio recorder <ul style="list-style-type: none"> <li>• Unlimited number of audio channels before, after and/or from the VCCS</li> </ul>	✓
Navigation-, radar- and other data (also proprietary and encrypted data) <ul style="list-style-type: none"> <li>• Unlimited LAN channels</li> <li>• Unlimited serial channels</li> </ul>	✓
Complete ATM/CNS recorder (ATG & TTW)	✓
Free selection of what to replay (screens, audio, radars, LAN channels, etc. or specific CWP with associated audio, screens and data) at any time of replay, and free selection of replay time at any time, all with immediate response both from local, remote and centralized replay station	✓
Integrity through independence <ul style="list-style-type: none"> <li>• Independent of the radars</li> <li>• Independent of the radios</li> <li>• Independent of the VCCS</li> <li>• Independent of the ATC/ATM system</li> <li>• Independent of the screens/display system</li> <li>• Independent of the type of data</li> </ul>	✓



### Agent/Distributor:

Jotron AS reserves the right to change the design and/or specifications at any time without prior notice. Reservations are also taken towards any general errors that may occur.

[www.jotron.com](http://www.jotron.com)

## CONTACT INFORMATION

Jotron AS  
P.O.Box 54  
3281 Tjodalving  
Norway  
Tel: +47 33 13 97 00  
Fax: +47 33 12 67 80  
sales@jotron.com

Jotron UK Ltd.  
Crosland Park  
Cramlington  
NE23 1LA  
United Kingdom  
Tel: +44 (0) 1670 712000  
Fax: +44 (0) 1670 590265  
sales@jotron.com

Jotron Asia Pte. Ltd.  
19 Loyang Way  
Changi Logistics Centre  
Rear Office Block 04-26  
Singapore 508724  
Tel: +65 65426350  
Fax: +65 65429415  
sales@jotron.com

Jotron USA, Inc.  
10645 Richmond Avenue, Suite 170  
Houston, TX 77042  
USA  
Tel: +1 713 268 1061  
Fax: +1 713 268 1062  
sales@jotron.com